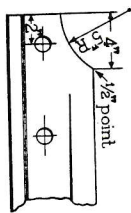
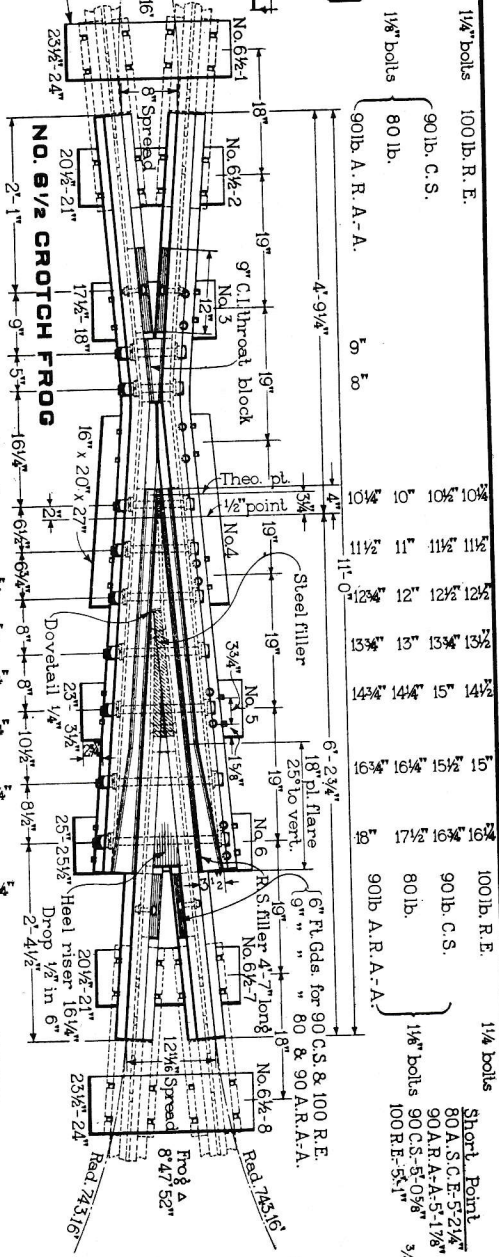


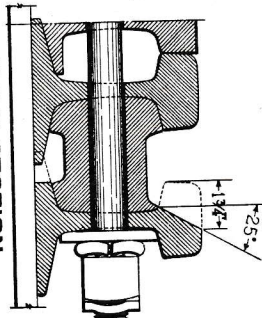
**SECTION THRU
THROAT BLOCK**



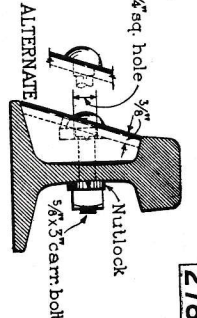
ELEVATION OF POINT



NO. 6 1/2 CROTCH FROG



**HALF SECTION
THRU HEEL RISER**



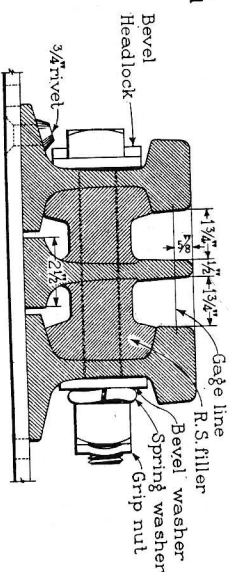
FOOT GUARD
All foot guards 3/8" steel

C.S.	278
------	-----

Note:
Rail ends to be drilled 2½" x 5½"; ¼" holes, .246" above base for 90lb A.S.C.E.
 ". ". ". ". ". ". ".
 ". ". ". ". ". ". ".
 ". ". ". ". ". ". ".
 ". ". ". ". ". ". ".
Loose plates to be stamped with weight of rail, frog number and position showing
under frog. All spike holes ¾" x ½" and to extend ⅛" under base of rail. Heel and
toe plates to be punched by R.R. company except as noted.
All angle bars furnished by R.R. company except as noted.
All bolts high carbon steel, heat treated. Extra thick nuts H.C.H.T.

Print rivets 7⁄8" dia.
Wing rails g'-0" for No. 6½ - g'-0" for No. 9 frogs.
Frogs to be made right or left hand as ordered. Long point on main track rail.
Mark each frog to show number, rail section and hand.

Approx Weights (Material furnished by Mfr. only)
No. 6½ Czech frogs-801b. 135.0lbs., 90lb A.R.A.-1415lbs., 90lb C.S. 1440lbs.,
 1001b. R.E. 1550 lbs.
No. 9 Frogs - 801b. 1395lbs., 90lb A.R.A.-1640lbs., 90lb C.S. 1605 lbs.,
 1001b. R.E. 1705 lbs.



SECTION AT POINT

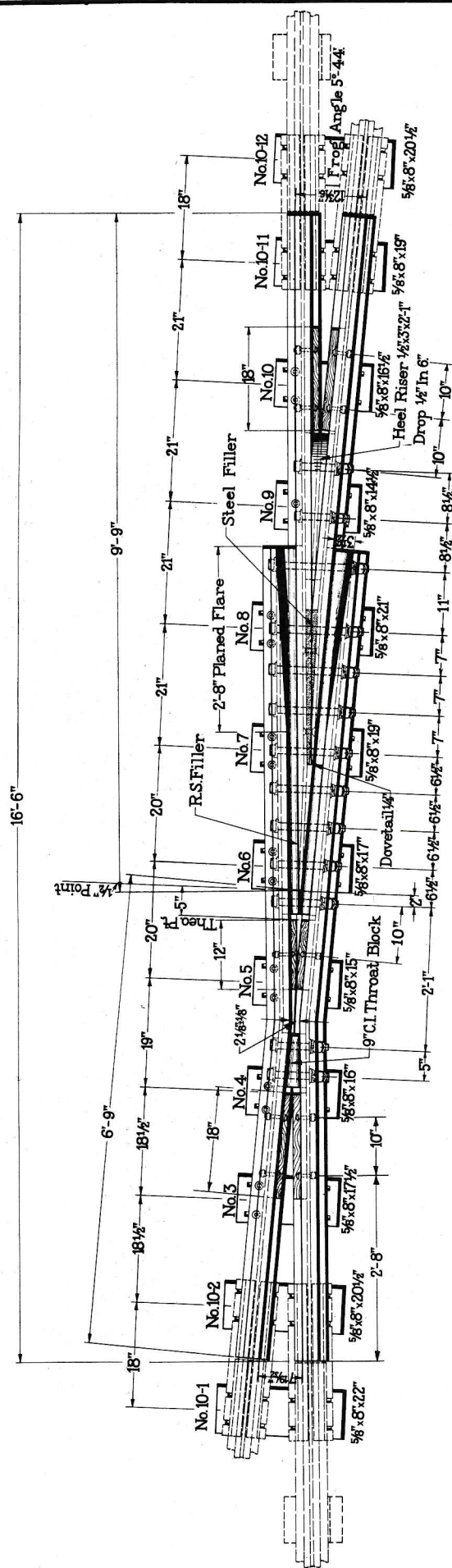


HEEL BLOCK 1 Required
East Iron

**UNION PACIFIC SYSTEM
COMMON STANDARD
NO. 6½ & NO. 9 RIGID FROGS**

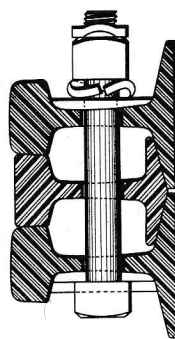
NO SCALE

ADOPTED APRIL 25, 1933

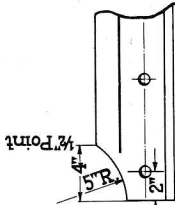


Notes:

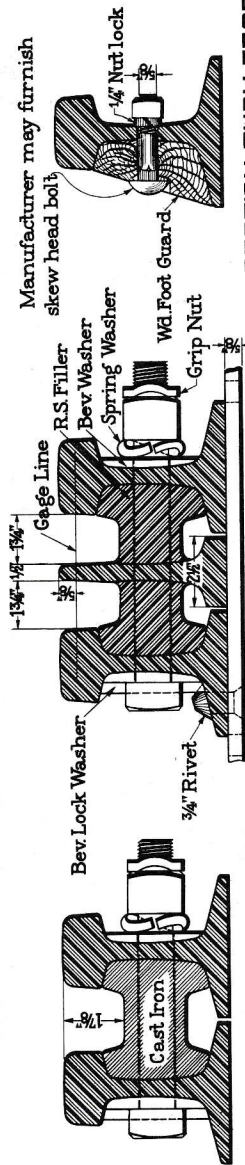
Unless otherwise specified rails will be drilled as noted below:
 Drilling for CS 100lb rail, 2 1/4" dia, 5/16" holes 1 1/2" above base;
 Drilling for 90lb A.R.A. rail, 2 1/4" dia, 5/16" holes 1 1/2" above base.
 Loose plates to be stamped with weight of rail, frog number
 and number showing position under frog.
 Spike bolts to be 3/4" square and to extend 1/4" under base of rail.
 Heel and toe plates to be punched to fit angle bar slotting.
 Angle bars and track bolts to be furnished by Railroad Co.
 For details of special angle bars, 90lb A.R.A. see CS drwg-248.
 For details of special angle bars CS 100lb rail see CS drwg-331.
 Body heel riser bolts and extra track nuts to be High Carbon
 Steel, Heat Treated.
 Bolts 1 1/4" dia, CS 100lb and 1 1/8" dia for 90lb A.R.A.
 Point rivets 1" dia. for CS 100lb and 7/8" dia for 90lb A.R.A.
 For details of wooden foot guards see CS drwg-255.
 Frogs to be made Right Hand and Left Hand as ordered.
 Long point of frog to be on main track rail.
 All frogs to have their Number and Hand marked on top
 of wing rail with steel die.



SECTION THRU HEEL RISER



ELEVATION OF POINT

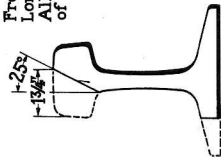


SECTION THRU THROAT BLOCK

SECTION AT POINT

SECTION THRU FT.GD.

PLANING AT END OF WING RAIL



**UNION PACIFIC SYSTEM
COMMON STANDARD**

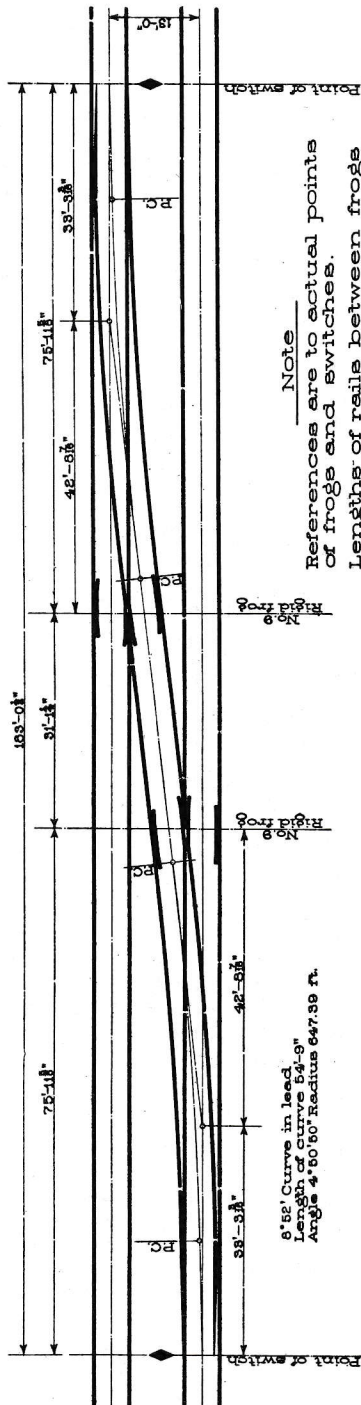
NO. 10 RIGID FROG
90LB A-A & CS 100LB F RAIL

NO SCALE

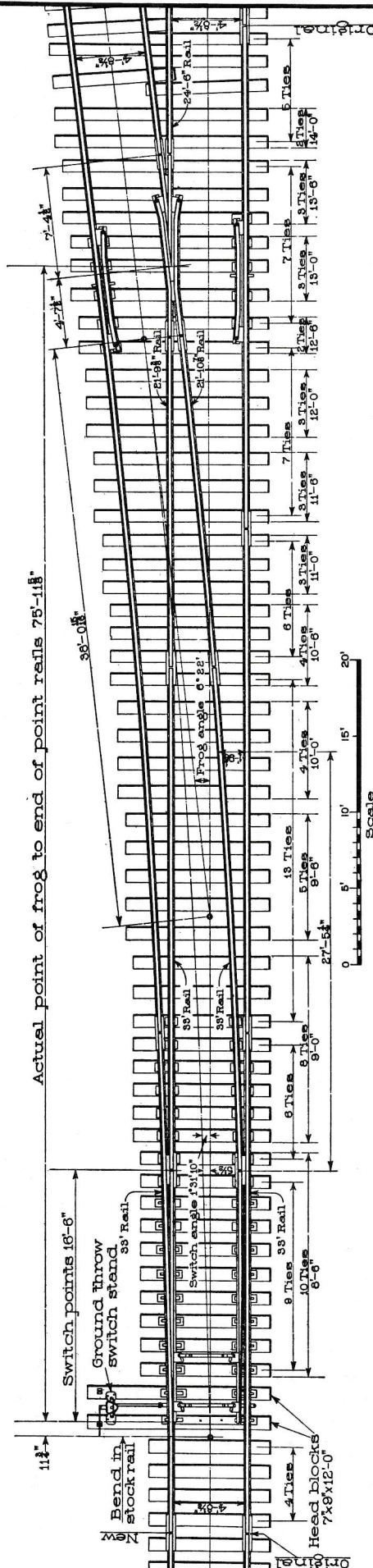
ADOPTED AUG. 1 1924

Note: For dimensions of crossovers to center passing tracks, where *10 Spring Rail Frog and *9 Rigid Frogs are used, see C.S.183 or 183-A.

LIST OF SWITCH TIES SHOWING LENGTHS			
SWITCH TIES WILL BE 7"x8" IN SECTION LENGTHS GIVEN ARE FOR 8 FT. MAIN LINES			
Where Longest Commercial Length 18.24 FT.			
NOTICE LENGTH	PIECES	UN. FT.	
5	8'-6"	Cut from 9 pieces 18 ft. long	162
5	9'-6"	1	
5	8'-6"	1	
1	11'-6"	Cut from 2 pieces 20 ft. long	40
2	8	10'-0"	
2	10'-0"		
3	10'-6"		
3	11'-0"		
2	11'-6"		
4	12'-0"	Cut from 12 pieces 24 ft. long	288
2	12'-6"		
3	13'-0"		
3	18'-6"		
2	14'-0"		
4	8'-6"		34
1	10'-6"		10.6
1	12'-0"		12
52		7" x 9" TOTAL	546.5



Note
References are to actual points
of frogs and switches.
Lengths of rails between frogs
may be varied to suit rail on hand.



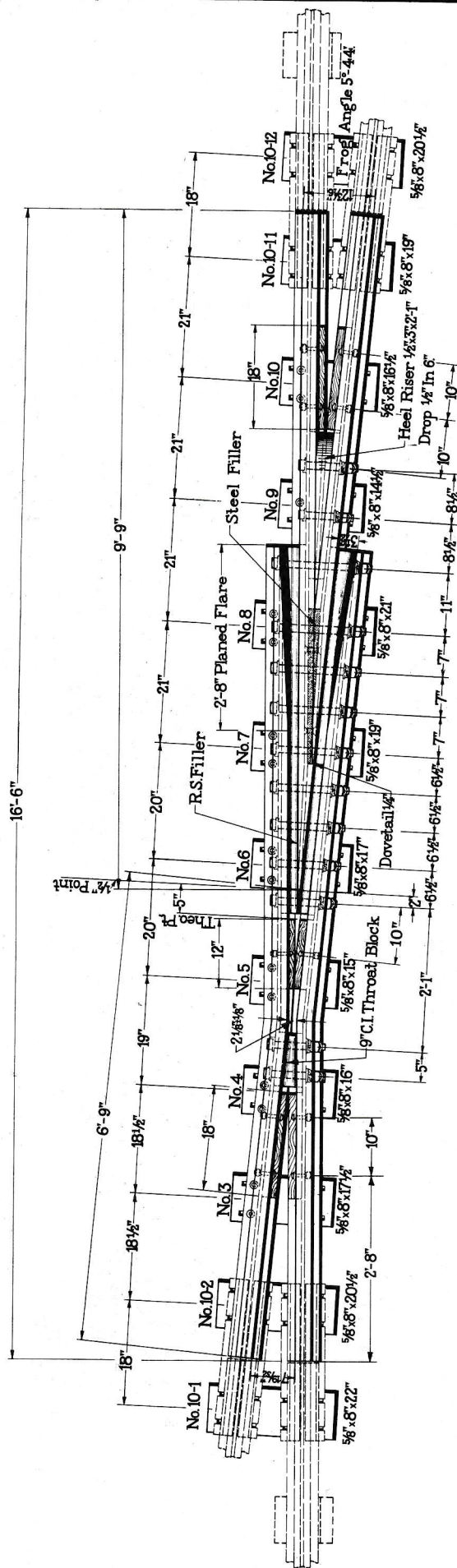
ARRANGEMENT OF JOINTS FOR 33 FT. RAILS

Turnout rails to be curved as shown for 8'52" curve before placing in track

COMMON STANDARD SWITCH LAYOUT

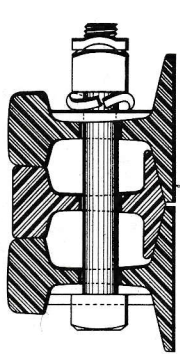
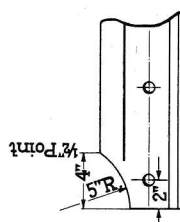
NO. 9 RIGID FROG, 16'-6" POINT RAILS

SCALE AS SHOWN H.P. ADOPTED: JUNE 1914



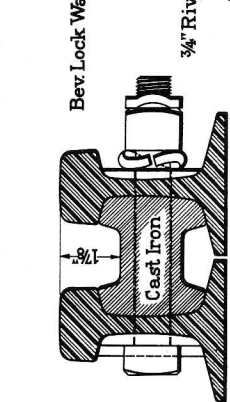
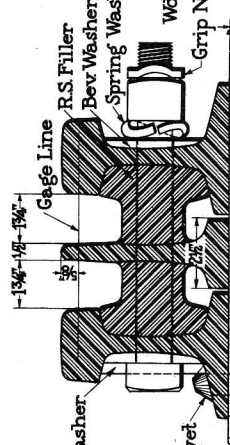
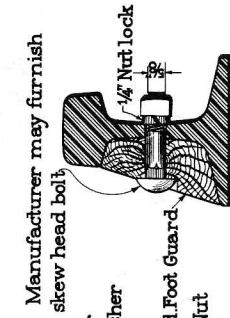
Notes

Unless otherwise specified rails will be drilled as noted below:
 Drilling for CS 100lb rail 2 5/8"x5/8" 1/4" holes 2 1/4" above base;
 Drilling for 90lb A.R.A. rail 2 5/8"x5/8" 1/8" holes 2 1/4" above base;
 Loose plates to be stamped with weight of rail, frog number and number showing position under frog.
 Spike holes to be 3/4" square and to extend 1/4" under base of rail.
 Heel and toe plates to be punched to fit angle bar slotting.
 Angle bars and track bolts to be furnished by Railroad Co.
 For details of special angle bars 90lb A.R.A. see CS dwg-248.
 For details of special angle bars CS 100lb rail see CS dwg-311.
 Body heel riser bolts and extra thick nuts to be high carbon steel heat treated.
 Bolts 1 1/4" dia CS 100lb and 1 1/8" dia for 90lb A.R.A.
 Point rivets 7/16" dia for CS 100lb and 1/8" dia for 90lb A.R.A.
 For details of wooden foot guards see CS dwg-255.
 Frogs to be made Right Hand and Left Hand as ordered.
 Long point of frog to be on main track rail.
 All frogs to have their Number and Hand marked on top of wing rail with steel die.



ELEVATION OF POINT

SECTION THRU HEEL RISER



UNION PACIFIC SYSTEM
COMMON STANDARD
NO. 10 RIGID FROG

90LB.A.R.A.&CS.100LB.RAIL

NO SCALE

ADOPTED AUG. 1 1924

PLANING AT END
 OF WING RAIL

