

CSU Fresno  
Dept. of Criminology  
Newsletter LXXVII

August 2013



Since January 2007



Global News



- The Criminology Department has applied for three new tenure track faculty positions effective for Fall 2014.
- Dr. George Kikuchi is the new criminology department graduate coordinator.
- Most criminology classes for Fall 2013 are filled to capacity.

**Coping with the past?  
Freedom of Speech German Style**

In 2007 a Berlin court sentenced a German national to six months confinement for having trained his dog to raise his right paw when commanded to show the "Adolf" greeting. The canine in turn was seized by the government and incarcerated in an animal shelter.

<http://www.welt.de/geschichte/zweiter-weltkrieg/article118960887/Rom-Krieg-Religion-Geschichte-des-Hitlergrusses.html>

Had he trained his dog to hum to the international socialist anthem, used in the USSR and popular in many leftist organizations, he would not have violated any law. You can listen to the anthem as part of a video production at:

<http://www.youtuberepeater.com/watch?v=mhineE8yaVg&name=International+Socialist+Anthem>

*Author's note: If you ban everything right, only the left is left.*

**August 2013 Newsletter Index:**

- 1- Freedom of Speech German Style
- 2-3 The "senior" or new driver. An issue in the US, Japan, and Europe
- 3 Kazakhstan-Kyrgyzstan Vodka Pipeline
- 4 Criminology Department News: Faculty Activities  
Oct/Nov off campus B.S. program classes
- 5-6 Motor vehicle (GPS) navigation in Japan
- 6-7 The Internet Player/Google Box from Sony and Smart TVs.
- 7 Interesting Photos

This newsletter is not an official publication of CSU Fresno or the Department of Criminology. Dr. H.O. Schweizer is the sole author and responsible for its content. You can email him at: [haralds@csufresno.edu](mailto:haralds@csufresno.edu)



## TRAFFIC SAFETY

### The senior and/or new driver

News about a disproportionate number of traffic accidents involving “senior” drivers and also recently licensed drivers, are common not only in the United States, but also in Europe and Japan. Attempts to address this problem can take many forms, including the more frequent re-testing of seniors, stringent rules for newly licensed drivers, and the more passive and less oppressive requirement to simply place a sticker on the front/back of a senior or new driver’s vehicle to signal their status to surrounding motorists. This would, hopefully, make other drivers more alert and also more tolerant of the “stickered” vehicles driving maneuvers.

This latter approach has been in effect on a national scale in Japan, where new drivers display a “leaf” style decal in front and back of their vehicle. Part of this leaf is a rich green color, sort of like fresh produce would have.



The sticker for seniors had also consisted of a leaf but with the typical colors of autumn when the (dry) leaves begin to fall.



This approach went well for many decades, but seniors have become more and more disenchanted with their “falling leaf” symbol, since it can also be seen as a sign of impending passing and therefore become an insult.

Consequently, the sticker for seniors was recently modified and made more appealing. It’s colors are now partly green (juicy) allowing the driver to continue feeling young and juicy.



## VEHICLE STICKERS...



The above driver was unsure of whether he is still juicy or dry and displays both decals on his vehicle.

**Germany** is currently exploring just such a system where new and old drivers must display their status on the vehicle. Since in Germany all traffic laws are national and not a function of legislation by individual states, such a rule can easily be implemented (imposed?) nationwide. Considering such a practice in the US, I can foresee problems with increased victimization (car jacking) of vehicles bearing the “senior” symbol since they may be seen as easy prey in some areas of the United States. Equally risky would be a vehicle decal through which drivers indicate their status as members of congress or the senate.

An interesting twist to the Japanese licensing system is that driver's with more than five years of accident free (not at fault) driving and no tickets have a gold stripe added to the back of the DL, which then gives them discounts at various retail establishments. Hm, perhaps we can apply that principle to college tuition.



### The Vodka Pipeline

Smugglers built a 500 Meter pipeline across the Tschu river bordering both countries and pumped thousands of liters of (untaxed) vodka from Kazakhstan to Kyrgyzstan before the pipeline was detected during routine patrols by customs authorities. Alcoholism is a serious problem in Kyrgyzstan where excessive consumption of alcohol is responsible for half of the yearly death toll for males between the ages of 15-54.

<http://www.welt.de/vermischtes/kurioses/article119119916/Schmuggler-pumpen-Wodka-durch-Pipeline.html>

The Kyrgyz newspaper KABAR also publishes some of its articles in English, and though most English language pages are not regularly updated, provide an interesting look at the country and its problems.

### Kyrgyz newspaper KABAR

<http://kabar.kg/eng/law-and-order/>

You can also access (in Russian) the country's **prosecutor's office** at:

<http://www.prokuror.kg/index.php?lang=ru>

and the government's national **anti-corruption organization** at

<http://anticorr.gov.kg/>





## CRIMINOLOGY DEPARTMENT NEWS

**Dr. K. CLEMENT** spent his summer finishing up the California Emergency Management and Homeland Security Education and Training Strategic Initiative

**Dr. E. HUGHES** participated in a workshop on prison education programs in London, an event sponsored by the Prisoners Education Trust. The event was attended by prison educators, academics, representatives from government agencies, staff from non-profits organizations, and ex-offenders.

**Dr. H.O. SCHWEIZER** worked on his monthly newsletters so you have something to read about and also visited various police agencies in Japan.

Below Dr. Schweizer and Mrs. Schweizer during one of their most enjoyable moments in Miyazaki, Japan:



### **Three new tenure track faculty positions:**

The criminology department has formed three hiring committees (one for each position). Once the job announcements have been approved, they will be included in the monthly criminology newsletter.

## OFF CAMPUS PROGRAM

### ***B.S. in Criminology***

#### **ELIGIBILITY:**

Any current or retired government employee, including members of the armed forces, with about two years of prior college coursework. Other applicants with full time professional employment in organizations or firms focusing on the security of the country's infrastructure (technology, ISPs, financial institutions, etc.) or working under contract with government agencies may be admitted on a case by case basis. Persons can join the program any time new classes begin. Additional information can be obtained from Dr. Schweizer at [haralds@csufresno.edu](mailto:haralds@csufresno.edu)

#### **REGISTRATION IS NOW OPEN FOR THE FOLLOWING OCT/NOV COURSES:**

##### **Crim 109 Comparative C.J. Systems**

(2 October-20 November) taught by Dr. H.O. Schweizer ([haralds@csufresno.edu](mailto:haralds@csufresno.edu))

First meeting is on 2 October with three additional Wednesday evenings and two Saturdays (0900-1630) on 15 Oct/20Nov.

##### **Geog 115 Violent Weather**

(7 October-20 November) taught by Dr. S. Omolayo ([samualo@csufresno.edu](mailto:samualo@csufresno.edu))

Meets Saturdays (0900 to 1700) 5 Oct & 2 Nov

Meets Mondays from 1800-2200: Oct 14, 28 & Nov 18, 25. First meeting is on Saturday, 5 October. Additional instruction will be web-based.

**All Saturday classes meet at the Clovis Police Department. Weekday meetings are held at the Fresno County Sheriff's Office.**

# Tech-Bits



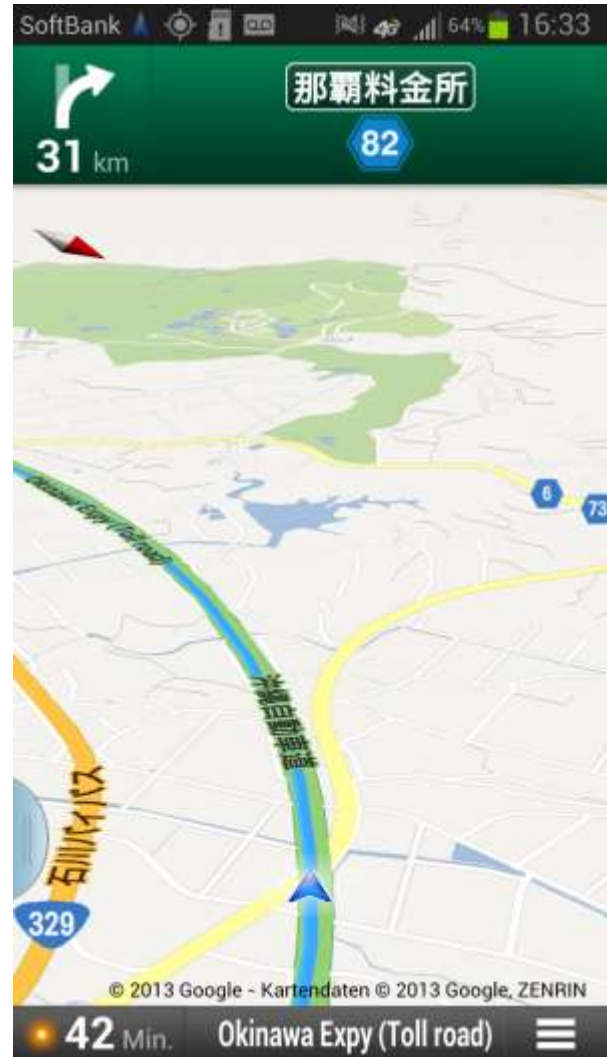
**Motor vehicle navigation in Japan** is somewhat different from the United States. Street names and house numbers are not common, and when using GPS navigation purchased in Japan or found in a rental vehicle, directions to a particular location are typically accessed by typing in the telephone number (land line) of the hotel, residence, or business.

While you can type in the name of a location, such as a park, monument or other location not listed with a telephone number, this is more complex when using Japanese characters.

During a recent visit to Japan I was intrigued by the possibility of using navigation from GOOGLE MAPS which is available on “smart phones” and also on I-phones. It is advisable, however, to add a global data plan to the cell phone account or the data usage will be more costly than the transnational flight.

To my surprise, GOOGLE navigation function in nearly all circumstances when entering a business/hotel name or popular destination such as a park, monument, businesses, shopping centers or government facilities. Directions from city to city also work without difficulty and information on distance and travel time are accurate. Toll roads are also indicated in the directions and users can select if they want to include

toll roads or not. When the smart phone accesses Google navigation while on line through a data plan, the access is dependent on the availability of phone service in the area where the travel occurs, but there is a method for downloading the map and directions while on WiFi and then using the navigation “off-line”.

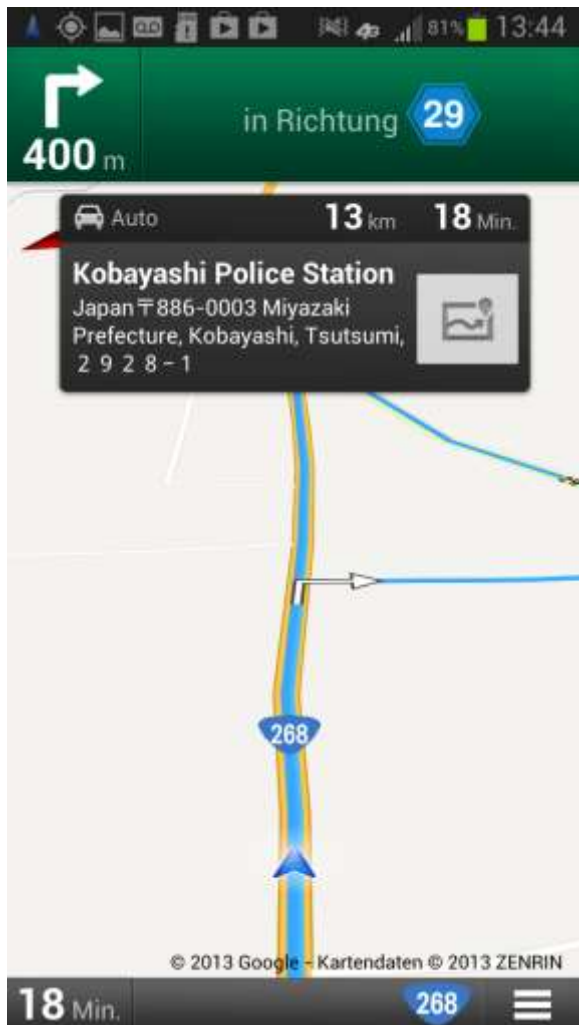


**City to City navigation from Miyazaki to Nagasaki.**

While in Japan I also experimented with various entry formats and found that the navigation , for example, did not respond when entering Japanese words in Romaji (using English letters to form words that

## GPS NAVIGATION IN JAPAN...

that sound out the Japanese word). The Romaji word for police is “keisatsu” but the navigator did not recognize it. Entering the term KOBAN, the name of a Japanese police post, also ended with *no such place found*. Entering the word POLICE in English, however, provided the following result:



NOTE: My navigation is setup to provide the information in German.

**NAVIGATION VOICE:** A major difference between after market navigators such as those from TomTom and Garmin, and GOOGLE navigation on a smart phone, is that GOOGLE navigation will not only

announce directions in whatever language you select, it will also speak out the names of the streets, though it pronounces the letters of a street name as if the name were in the selected language. All after market GPS navigators allow you to select different languages for voice navigation, but TomTom has the largest selection of languages.

## SMART TV AND GOOGLE BOX

**Use your favorite smart phone apps on your TV.**

While most DVD players or TVs allow you to select various internet based entertainment services such as YouTube, Pandora, Hulu, and others, what they lack is a built-in internet browser that gives you access to any website just as with Firefox or Internet Explorer. Some of the latest TVs however, (Smart TVs) have a built in internet browser (by Google) and allows not only full internet access, but also the ability to download and use all of your favorite smart phone apps. The connection to the internet can be through WiFi or a cable connection.

If your TV does not have a GOOGLE Chrome browser, you can purchase An INTERNET PLAYER/GOOGLE TV box which interfaces between your internet connection and TV, and gives you full use of an internet browser as with a Smart TV. Once connected your TV screen may look as the one below:





## INTERNET PLAYER/GOOGLE BOX...

The TV or Google Box have a remote control that has a mouse pad operated pointer and simulates what you would see on your computer screen or smart phone. Since it is able to use various smart phone apps, you do not have to use an Internet browser at all when accessing dedicated video services such as DRAMA FEVER (my favorite for Korean dramas) or Internet Radio.



### The Sony Internet Player (Google Box)

While there are other brands of Internet Players, the Sony has the best ratings.

## INTERESTING PHOTOS



Police officer at a Festival in Japan



Police Traffic Stop in Naha, Okinawa



Police Recruiting Poster in Miyazaki, Japan